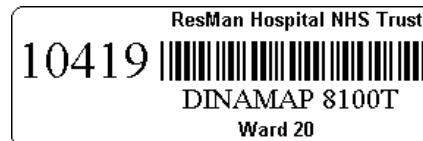


# ResMan Mobile Work Processing Example

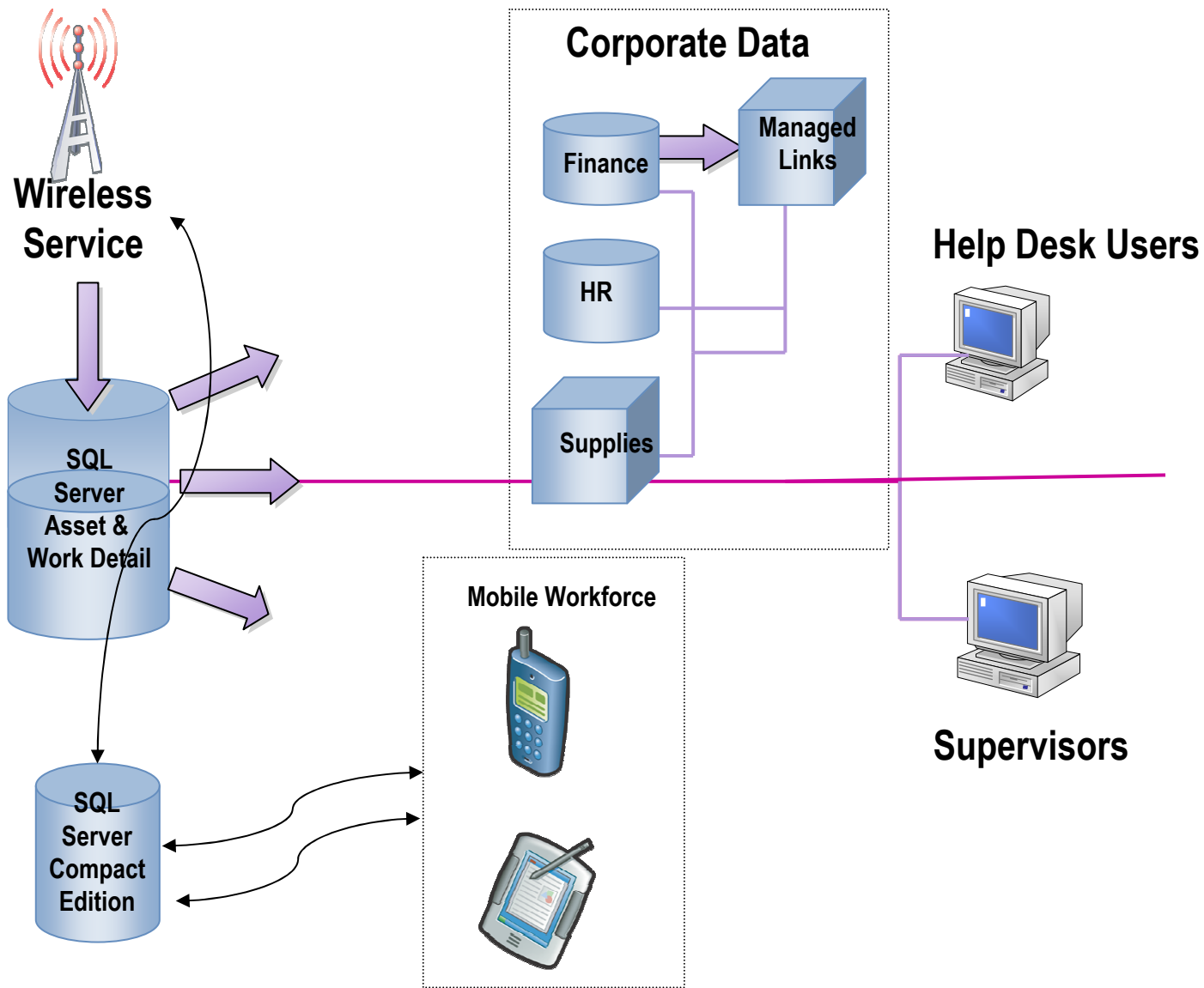


## Mobile Work Processing Overview

- Uses standard Windows Mobile Personal Digital Assistant (PDA)
- Users Log on using Windows Authentication or SQL credentials
- Uses SQL Server Compact Edition on the PDA
- Connectivity via WiFi Wireless Networking; Bluetooth for short range; & GPRS mobile telephony
- USB connection is available if required
- Microsoft ActiveSync ensures two way data transfer between PDA & the Resman SQL Server
- Mobile computers can contain RFID and Bar Code scanners if required



# ResMan Mobile Work Processing



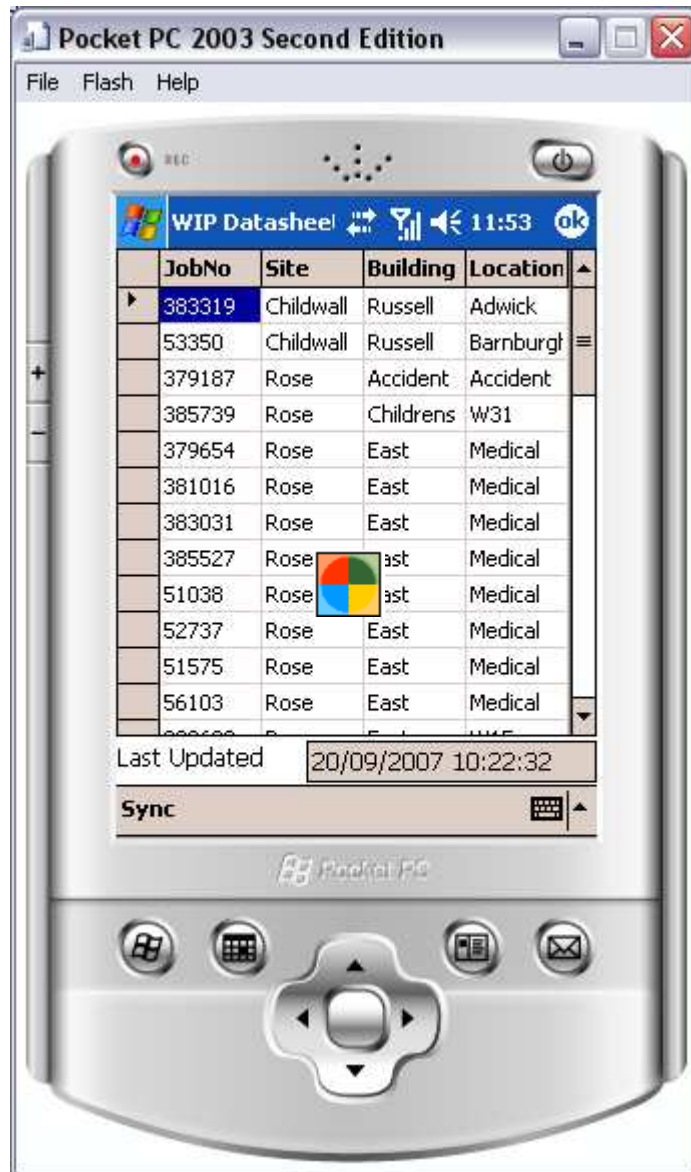
## Mobile Workforce Log On Through PDA



### Simple Log On procedure

- Log on using Windows or SQL Server Authentication
- Select Name from drop down list
- Only work allocated to the User Logging On is presented

## Work can be presented in datasheet format



### Work List

- Technicians' work is presented in list form
- Work can be presented in Priority order
- Using Sync activates Windows Synchronisation & brings the latest data from your Resman SQL Server
- Scroll through the list or take in priority order
- Double click to present full work details

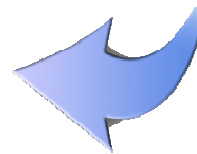


## Full work details available in a useful tabbed form

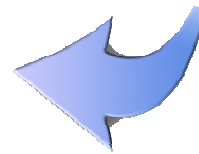


### Tabbed form view

- This tabbed view enables data to be viewed in logical groups e.g. Asset details; Caller / Owner / Department details; Work details et al
- Click on a tab to view relevant data
- In this tab Asset / Equipment details are displayed



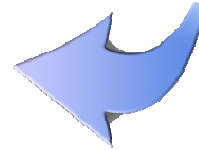
## Full work details available in a useful tabbed form



### Caller Details

- In this example the tab displays Caller details e.g. Owner / Department with useful contact details available

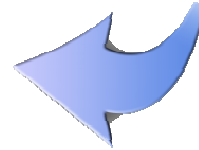
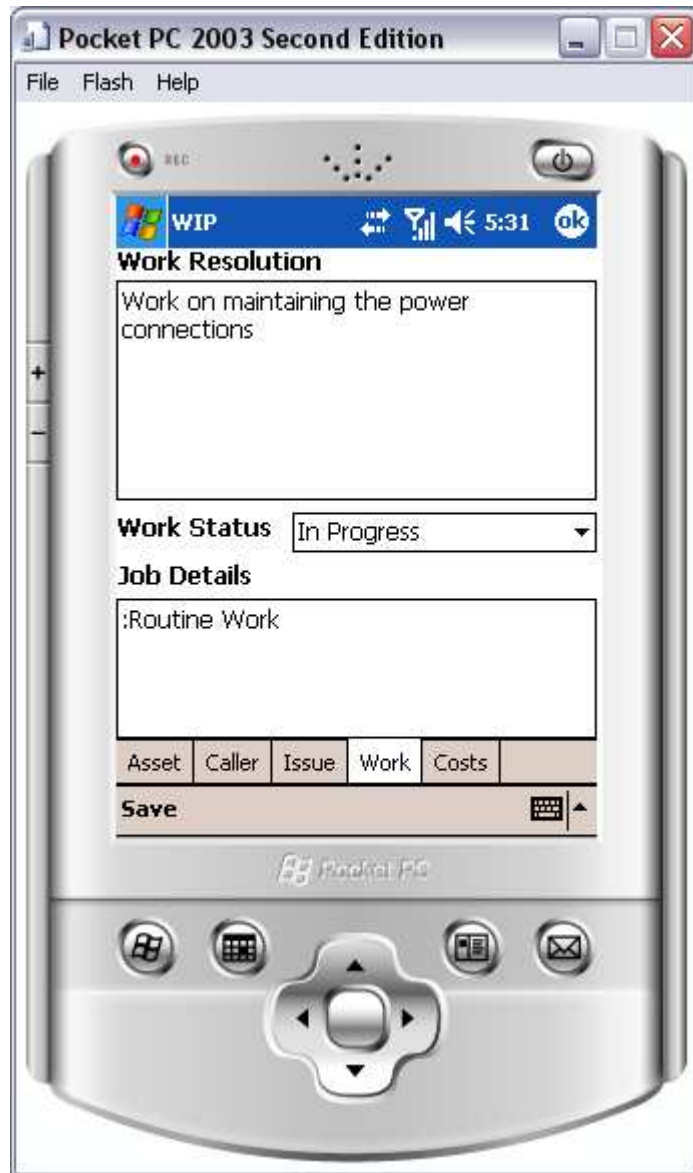
## Full work details available in a useful tabbed form



### Issue Details

- In this example the tab displays details pertinent to the logging & Issue of the work

## Full work details available in a useful tabbed form



### Work Details

- In this example the tab displays Work related details
- The initial logged call details are displayed, & work performed & the Job Status can be updated

## Full work details available in a useful tabbed form

Pocket PC 2003 Second Edition

File Flash Help

WIP 10:31

Reported On 19/09/2007 16:33

Due Date 09/10/2007

Started 20/09/2007 12:00

Completed 20/09/2007 14:00

Hours 2:00 Other 1

Total 3:00

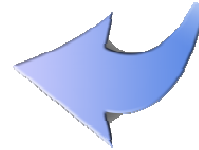
Parts 32.53 Labour 37.70

Other 10

Total 80.23

Asset	Caller	Issue	Work	Costs

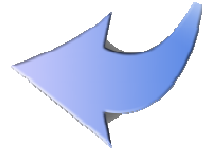
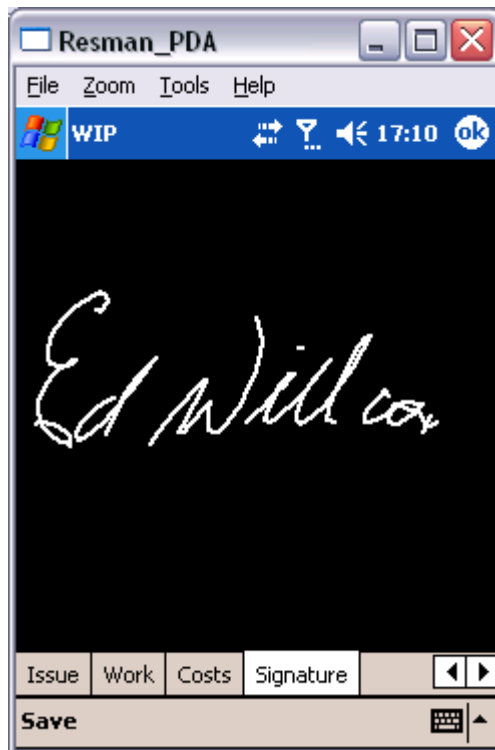
Save



### Cost & Time Details

- In this example the tab displays Costs & Time related details
- The initial logged call details are displayed, & work performed & the Job Status can be updated

## Full work details available in a useful tabbed form



### Signatures

- In this example the tab displays a Clients signature
- The signature is also sent to the Server during ActiveSync & can be displayed in Maintenance Management

# ResMan Mobile Work Processing Summary

The screenshot displays three overlapping windows from the ResMan Mobile Work Processing Summary application. The top window is the 'Login' screen, showing a 'Staff' dropdown menu with 'Michael Holmes' selected and a 'Password' field with asterisks. The middle window is the 'WIP Datasheet' screen, displaying a table of work items. The bottom window is the 'Work Resolution' screen, showing 'Work Completed within SLA' and 'Work Status' set to 'Completed'.

JobNo	Site	Building	Location
383319	Childwall	Russell	Adwick
53350	Childwall	Russell	Adwick
379187	Rose	A	
385739	Rose	C	
51575	Rose	E	
385527	Rose	E	
383031	Rose	E	
379654	Rose	E	
381016	Rose	E	
56103	Rose	E	
51038	Rose	E	
52737	Rose	E	

Work Resolution  
Work Completed within SLA  
Work Status: Completed  
Job Details: :Routine Work  
Asset | Caller | Issue | Work | Costs  
Save

## Summary

- A standard NHS version is available
- User defined variations will also be made available & tailored to your precise requirements