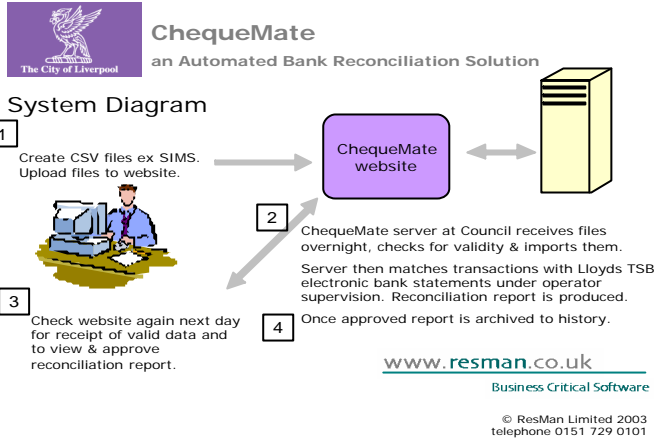


ChequeMate™ Factsheet



**Product Description**

ResMan ChequeMate is an internet based automated bank reconciliation system designed for improving the accuracy, speed and efficiency of financial reporting between a Council's Education Department and Schools participating in Cheque Book Management.

The system comprises a database with sophisticated transaction matching processes, and a website through which data is uploaded from schools and reports are downloaded to schools.

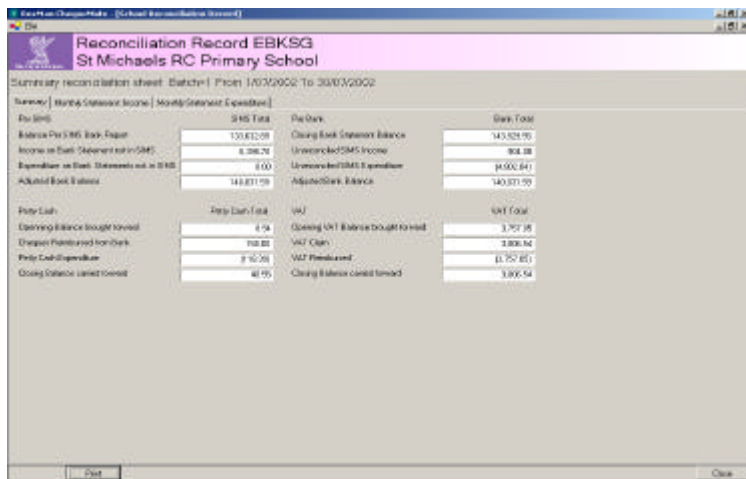
The system is easily adapted to other environments where reconciling bank transactions manually is inefficient.

**Product History**

ResMan ChequeMate is the product of a collaboration between ResMan Limited, a leading ISO accredited Microsoft systems house, and Liverpool City Council, Education and Life Long Learning Department.

As such, it has been specifically designed to meet the needs of this sector, and accommodate the various systems with which ChequeMate will interact.

The system has been designed around the latest technologies, and has been fully proven before being rolled out to up to 220 schools in the region.



**ChequeMate**  
an Automated Bank Reconciliation Solution

**Data Available for 1 School** (Green)

**No Data for 224 Schools** (Red)

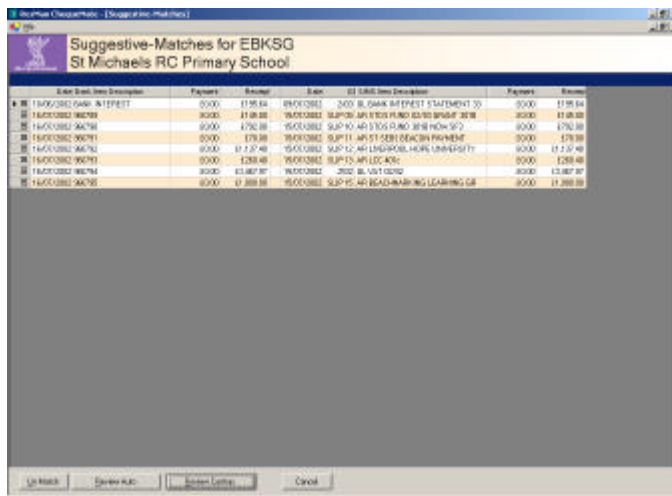
- Green:** Data has been located, validated and is ready for processing. Proceed to Schools Reconciliation button.
- Red:** No data has been provided recently. Operator will need to contact school.
- Yellow:** Data is incomplete; requires operator to contact school to resolve the issue.
- Orange:** Data has been located but contains errors and requires Operator to contact school to resolve the issue.

www.resman.co.uk  
Business Critical Software  
© ResMan Limited 2003  
telephone 0151 729 0101

**Features**

The operation of the system is based around a dynamic switchboard (shown), through which the operator manages and processed data being received from the users using a traffic light colour coding system. The switchboard is updated as data is received.

### ChequeMate™ Factsheet



#### Auto Matching

Data matching is done automatically with manual supervision.

Processing is faster and more accurate than manual methods.

#### Audit Trail

ResMan ChequeMate includes a comprehensive audit trail of data files submitted and flags and processes applied to each transaction.

The audit trail also contains extensive user details since every logon and log off, and transaction made is date, time and user stamped.

#### Web Interface

The remote users submitting data for processing make use of a secured website which allows them to submit data files in standard CSV format for processing.

#### System & Data Security

ResMan ChequeMate contains both basic and sophisticated security features.

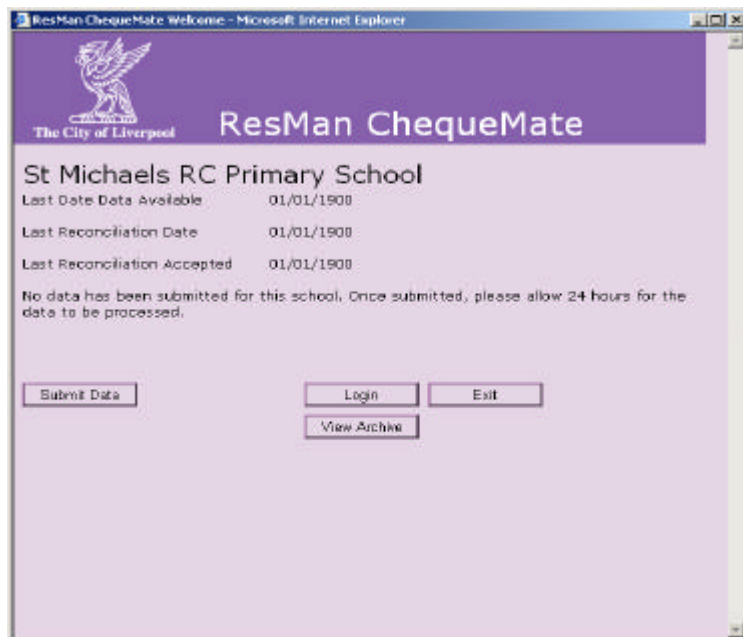
All users are issued with a password to access the system, and are aided by context based validation messages. ResMan ChequeMate also assigns user privileges to each user.

Activity such as logging in and posting transactions is user, date and time stamped, and available for inspection within the database.

The system contains full import, export, repair, backup & restore facilities.

#### User Guide & Help

The system is shipped with comprehensive online help files, designed using the latest Windows HTML standards, and hard copy User Guides.



ChequeMate™ Factsheet

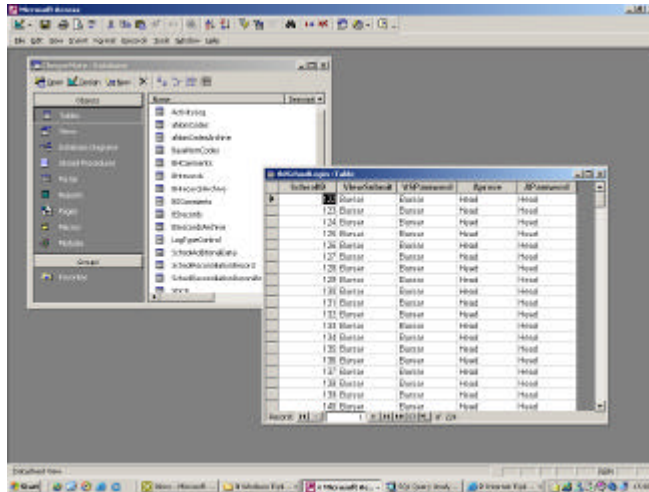
Reporting

A number of standard reports are shipped with the system.

A Report Writer is also included, dependent on Microsoft Access 2000 or better being available on the user's PC. Other standard reporting tools such as Crystal Reports can be accommodated if preferred.

Archive

An archive of all received data is maintained in the database should any future enquiry or difficulty arise. The users are given full access to prior reports via an archive accessed from their secure web pages.



The screenshot shows a Crystal Reports financial statement for St Michaels RC Primary School. The report includes sections for 'Pre Bank', 'New Bank', 'Party Cash', 'VAT', and 'Monthly Statement of Expenses'. It lists various financial items and their corresponding amounts.

Pre Bank		New Bank	
Balance Pre Bank Statement	1,000.00	Closing Bank Statement Balance	1,000.00
Income to Bank Statement not in SMS	0.00	Unrecorded SMS Income	0.00
Expenditure to Bank Statement not in SMS	0.00	Unrecorded SMS Expenditure	0.00
Adjusted Bank Balance	1,000.00	Adjusted Bank Balance	1,000.00
Party Cash		VAT	
Opening Balance brought forward	0.00	Opening VAT Balance brought forward	0.00
Changes to Balance	0.00	VAT Sales	0.00
Party Cash Expenditure	0.00	VAT Purchases	0.00
Closing Balance carried forward	0.00	Closing Balance carried forward	0.00
Monthly Statement of Expenses			
A. Opening Contract Bank of Cash Balance		1,000.00	
Income			
B. Adverse Donor City Council	0.00		
C. VAT Invoiced to School	0.00		
D. Revenue Income per Bank Cheque	0.00		
E. Parents/Capital Income per Bank Cheque	0.00		
F. SMS Challenge Income per Bank Cheque	0.00		
G. Other Income per Bank Cheque	0.00		
H. VAT on Income	0.00		
I. Total Income per Bank Cheque (B+D+G+H)	0.00		
J. Total School Income (I+VAT)	0.00		
Expenditure			
K. Revenue Expenditure per Bank Cheque	0.00		
L. Parents/Capital Expenditure per Bank Cheque	0.00		

Company History

ResMan Limited was formed in 1990 to provide software to the NHS and other Public Sector organisations. ResMan remain loyal to this market today, supporting over 60 users.

ResMan Limited formed a commercial division in 1997 to address a need for professional services to medium sized companies in the North West, which has grown to account for approximately 50% of ResMan's overall business.

ResMan have further developed their commercial success with the introduction of Integrated and Tailorable Accounting Modules.

ResMan achieved BS EN ISO 9001:1994 accreditation for software design and support in March 2000 in recognition of our commitment to quality, and this has been supplemented by our achieving BS EN ISO 9001:2000 accreditation in May 2003.

Technical Data

ResMan ChequeMate has been produced using Microsoft's VB.NET, ASP.NET and SQL Server 2000. The transfer of data requires FTP services to be enabled.

For client PCs, any machine able to support the .NET platform will be able to run the application. Super Users wishing to create and run reports will require MS Access 2000 or greater on the client PC.

School PCs will Internet Explorer version 5 or above, and an internet connection. No software is required for the Schools.

Prices

We will be pleased to provide a quotation covering all aspects of installation including training, implementation, data services and comprehensive ongoing technical support.