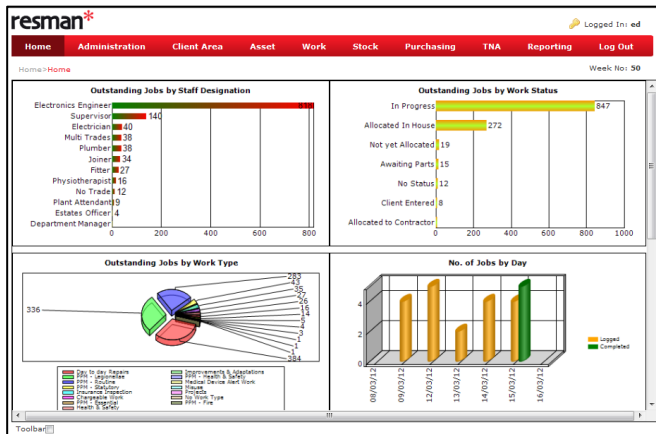
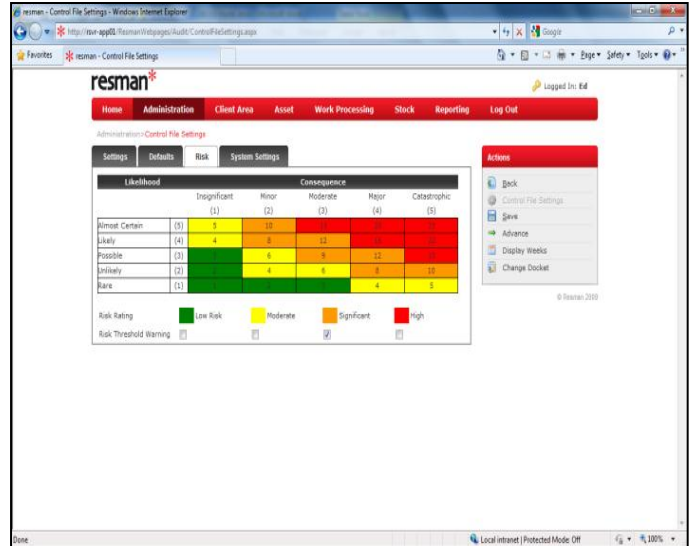


Resman is a Risk based software solution designed to help NHS Estates staff deliver departmental efficiency through the cost effective management of Trust Land, Property, Plant and Equipment, and management of non-Asset related Tasks. Resman's Risk based approach delivers compliance with NHS Litigation Authority standards, increases patient safety, and reduces costs. Resman is fully web based and you may therefore operate over your corporate intranet or utilise Resman's hosted solution.

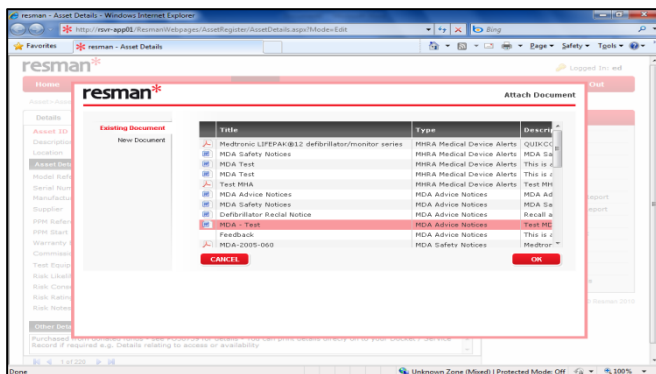
Resman helps you

- Meet Primary and Secondary legislation guidelines by ensuring Asset and Work Risks are easily identified
- Fulfil liabilities of Health & Safety at Work Act 1974
- Improve best practice in Health & Safety and reduce legal costs
- Deliver compliance with NHS Litigation Authority best practice on Risk, traceability and training
- Appraise Risk and set realistic targets
- Set up flexible user definable audit surveys for BREEM Environmental; Fire; Legionella; PEAT etc.
- Reduce paperwork and increase performance
- Demonstrate how good practice contributes to your organisation's Corporate Responsibility



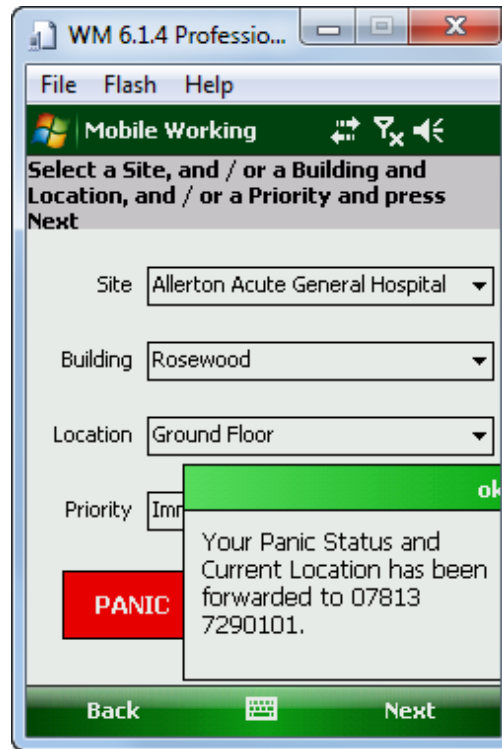
System Features

- Fully Web Based
- Straightforward Licensing
- Scalable from 1 to Many Users
- Multi Company
- PDA, Laptop and Safety Tester Support
- Lone Worker support with Location Tracking
- Helpdesk for Work Requisitions and Minor Works
- Planned Work, Planning and Scheduling
- Asset Register
- Document Management built in as standard
- Asset and Work Based Risk
- Standard and Graphical End User Reporting
- Incorporates Microsoft's Business Intelligence (BI) Reporting Suite and Dashboard presentation of KPIs
- Includes Power Pivot
- User Access and Privileges
- Supports Active Directory
- Audit Module
- Client Departmental Login
- Library Module
- Staff Management Training and Qualifications for Tasks
- Training Needs Analysis and Links to ESR
- Contract Management
- Stock Management
- Purchase Order Processing
- Budgeting Monitoring, Commitments and Invoicing
- XML and ODBC links to Corporate Finance



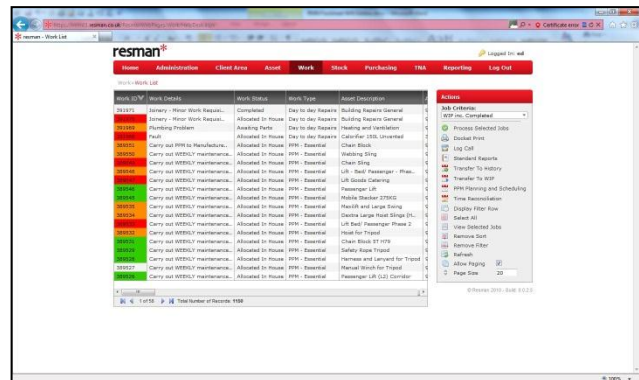
System Benefits - Efficiency

- Fully Web Based - runs without fuss on a single PC or across a corporate network
- PDA Support – manage jobs and improve workflow through fully featured PDA add on
- PDA Support – track Assets in situ; appraise condition and set up user definable Audit Surveys
- Helpdesk - allows staff to log jobs quickly
- Document Management - easy links to manufacturers guidance, hazard warnings or MDA notices
- Asset and Work Based Risk - allows a department to profile and manage Risk across Assets and jobs
- Management Staff Training - allocate work only to staff trained on specific Models and Equipment
- User Access and Privileges - granular control of access across the system
- Client Login – provide your clients with their own login to report work and manage equipment saving your staff time
- Email Work and Status acknowledgement
- Library Module – operate an efficient equipment library



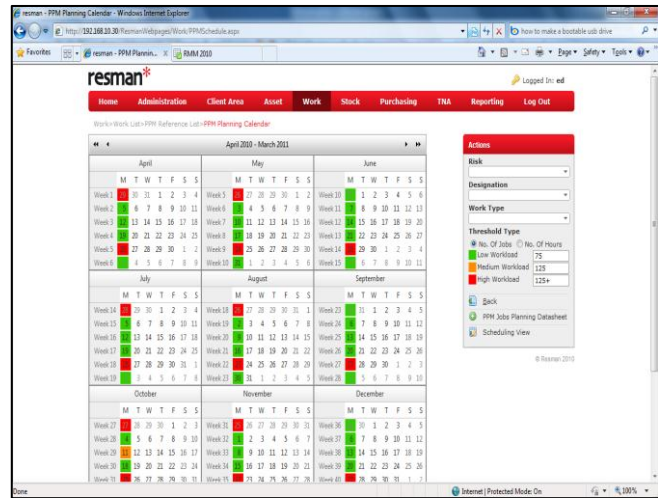
System Benefits - Cost Effectiveness

- Straightforward Licensing – easy to understand pricing, and competitive upgrades for a limited time
- Scalable from One to Many users – buy a one user license and add users as your needs increase
- Multi Company – manage equipment for multiple organisations without logging in and out of separate databases
- Purchase Order Processing – run purchase ordering for your department or link to procurement systems via XML
- Contract Management – maintain effective control over third party arrangements and SLAs
- Invoicing – send invoices internally or externally



System Benefits – Management Improvements

- Planned Work - optimise the life of Assets, minimise costs and improve clinical standards through effective use of PPM
- Work Traceability providing a full Audit of “Who did What and How” at What Cost and Performance achievement. Traffic light colour coding throughout
- Stock Management - keep effective control over departmental stock and spares
- Asset Register – maintain location, contract and financial information on all equipment held
- Reporting – extensive license free standard and end user bespoke reporting
- Audit Module – user and date stamped records on all activity in the database
- Training Needs Analysis (TNA) – measure your departments progress towards training targets for the Trust as part of NHSLA, and manage training levels of those using the Library



Resman is a leading ISO accredited Microsoft systems house and offer solutions using the latest development tools and techniques.

Our Public Sector, Estates Asset and Maintenance Management systems linked to financial and management accounting and business solutions are well proven. We are also proud to count a number of corporate users as clients. All Resman systems conform to Accounting Standards; International Standards Organisation Calendar model ISO 8601:2004; and Reliability Centred Maintenance (RCM) as per the SAE International Standards Development standard SAE JA101.

NHS Supplies PASA Profile sid023162 for Estates and Facilities.

Contact:

For further information, to arrange a system demonstration or to learn about competitive upgrades contact Ed Willcox on the telephone number or Email address below.

T: 0151 729 0101

E: web.sales@resman.co.uk

W: www.resman.co.uk

